



PUC-SP

ICIM - 18th
International Conference on
Innovation and Management

Logos of participating institutions: PUC-SP, Tilburg University, University of Vaasa, UTM, Wuhan University of Technology, Yamaguchi University, Prifysgol Cymru / University of Wales Trinity Saint David, and CUIT. Country flags for Brazil, USA, Japan, and China are also displayed.



Blockchain technologies in Autopoietic Smart Cities





True blockchain-led transformation of business and government, we believe, is still many years away. That's because blockchain is not a “disruptive” technology, which can attack a traditional business model with a lower-cost solution and overtake incumbent firms quickly. Blockchain is a foundational technology: It has the potential to create new foundations for our economic and social systems. But while the impact will be enormous, it will take decades for blockchain to seep into our economic and social infrastructure.

TELOSA A totally equitative utopic City of 2030,
using only Renewable Energy being developed by
Mike Lore (<https://cityoftelosa.com/>)





TRUE BLOCKCHAIN-LED TRANSFORMATION OF BUSINESS AND GOVERNMENT, WE BELIEVE, IS STILL MANY YEARS AWAY. THAT'S BECAUSE BLOCKCHAIN IS NOT A "DISRUPTIVE" TECHNOLOGY, WHICH CAN ATTACK A TRADITIONAL BUSINESS MODEL WITH A LOWER-COST SOLUTION AND OVERTAKE INCUMBENT FIRMS QUICKLY, AND ACTUALLY BITCOIN RECENTLY REACHED \$67,000.

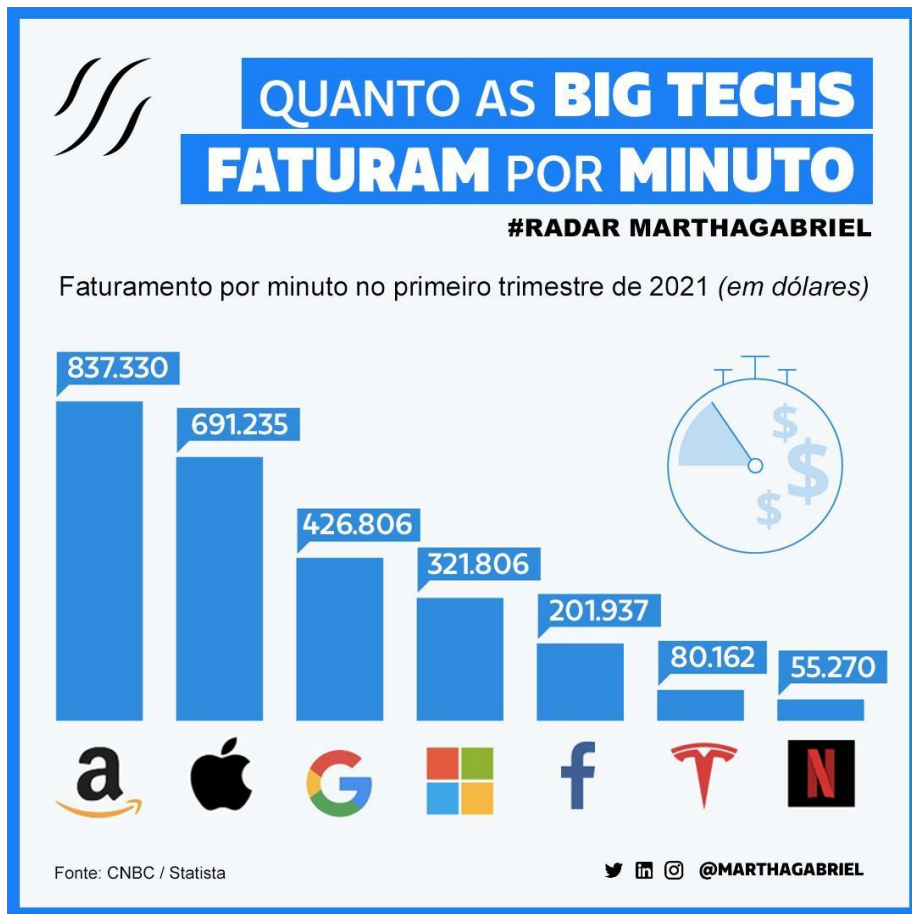
Blockchain is a foundational technology: It has the potential to create new foundations for our economic and social systems. **But while the impact will be enormous, it will take decades for blockchain to seep into our economic and social infrastructure, and the cost may be high. SO NOW WHAT ?**

THE METAVERSE (1992) is an online, 3D universe that combines various virtual spaces and allows users across the globe to meet, chat, work, and play games together. Blockchain, crypto, gaming, VR, and AR are building a new way to experience the Internet. the metaverse is an online, 3D universe that combines various virtual spaces and allows users as Avatars across the globe to meet, chat, work, and play games together. ***METAVERSE DSYTOPIA OR INESCAPABLE FUTURE ?***



Metaverse as a virtual reality environment that contains a host of different 3D spaces and is also known as the Internet of Shadows. The metaverse is later used to describe immersive, shared spaces accessed across different platforms where the physical and digital converge. FACEBOOK RELEASES, VR App Duped A Step - Metaverse! - ClinchBase





Market Value May 2021

Apple US\$2.22 tri

Microsoft US\$1.87 tri

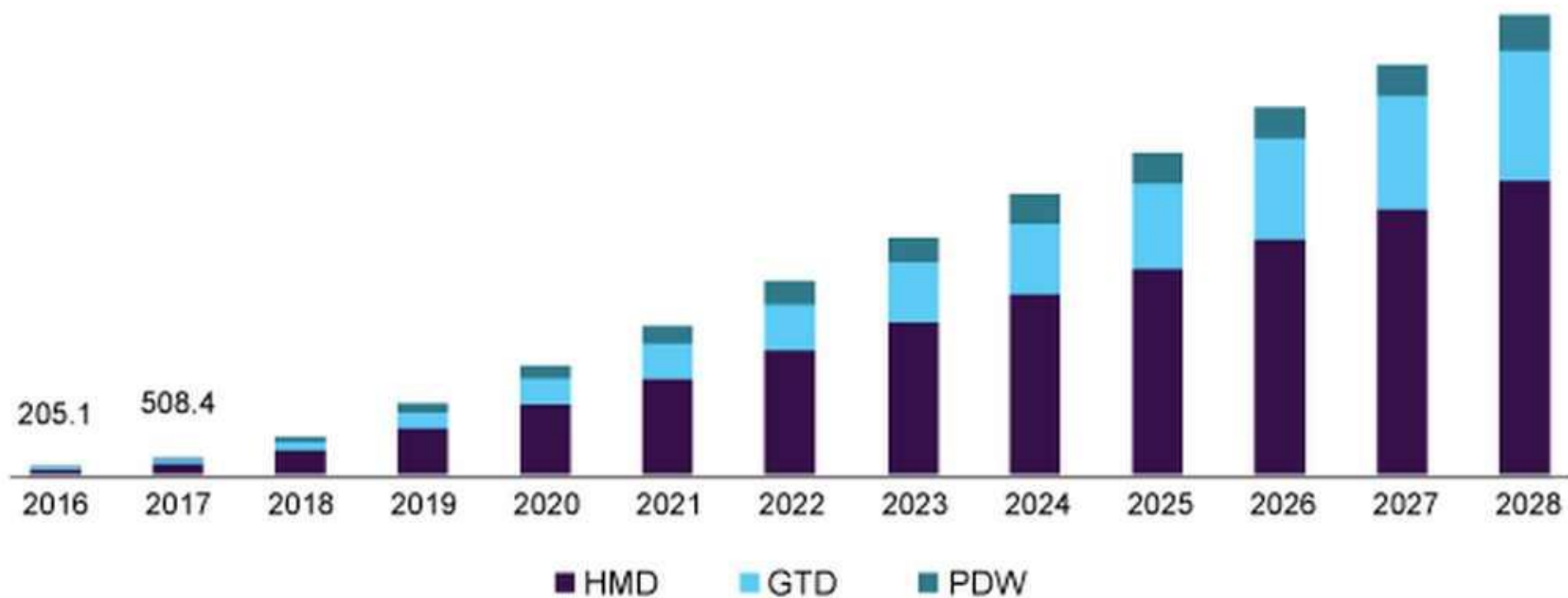
Amazon US\$1.59 tri

Google US\$1.50 tri

Facebook US\$852 bi

Amazon> Apple> Google> Microsoft> Facebook >Tesla> Netflix

The U.S. virtual reality market size, by device, 2016 - 2028 (USD Million)



Source: www.grandviewresearch.com

The Metaverse: How close are we, and how we'll be dealing with this new kind of Big Brother Age (Facebook*, Google, ..) that represents a New Cyberspace Frontier of Power : *The Age of Surveillance Capitalism* (S. Zuboff), *Capital in the Twenty-First Century* (T. Picketty), *The Origins of Totalitarianism* (H. Arendt's) ?



***FACEBOOK IS IN CRISES:**
Facebook's Apps Went Down.
The World Saw How Much It Runs on Them.
The outage disrupted the digital lives of small-business owners, politicians, aid workers and others. But for some, it was a welcome reprieve. NYTimes, Oct 26

<https://www.nytimes.com/2021/10/05/technology/facebook-down-ig-down-whatsapp-down.html>

DEVELOPING RESILIENCE

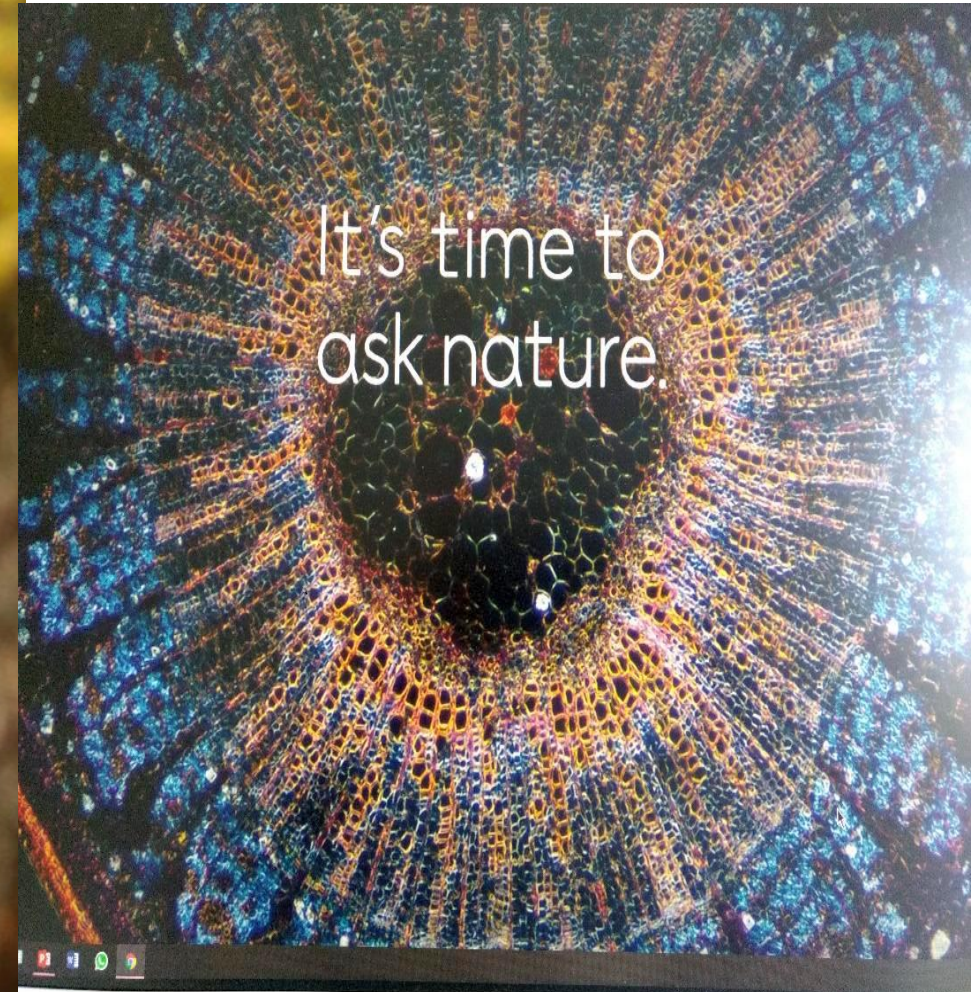
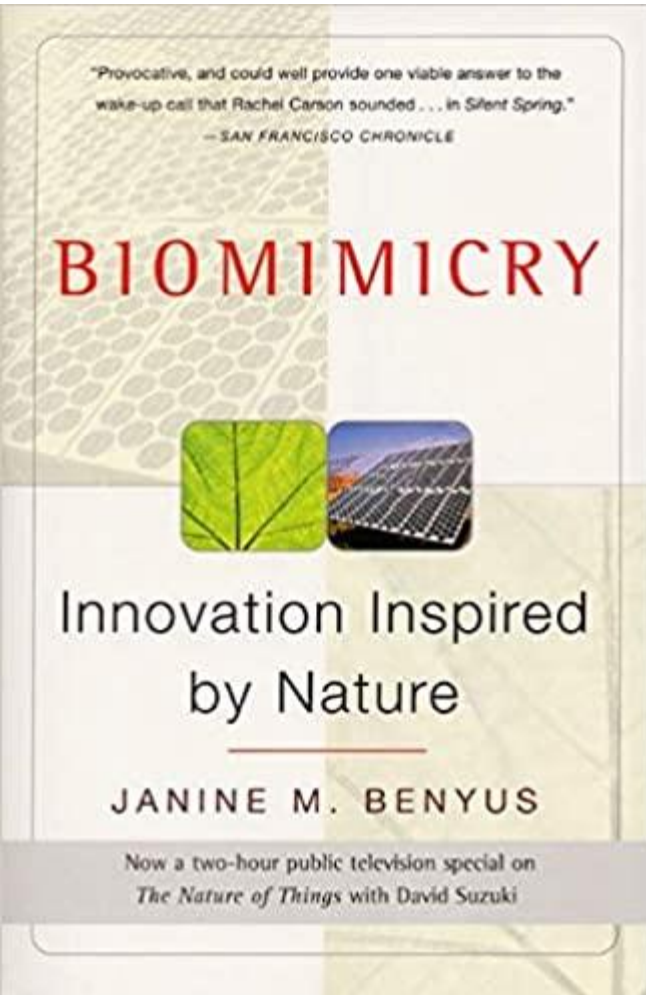


LEARNING FOR NATURE is a premier e-learning programme of the [United Nations Development Programme](https://www.un.org/en/development/dnp/learning-for-nature/) (UNDP) That connects biodiversity policymakers, change-makers, and on-the-ground subject matter experts to promote biodiversity conservation and facilitate the achievement of the [Sustainable Development Goals](https://www.un.org/en/development/dnp/learning-for-nature/) (www.learningfornature.org)

LEARNING FROM NATURE to Solve Big Problems. Systemic, nature-inspired solutions exist to lessen, and ultimately reverse humanity's negative impact on the planet, regenerating ecosystems and revitalizing human systems. if we turn to nature for solutions we may just come up with better performing alternatives. (www.biomimicry.org)

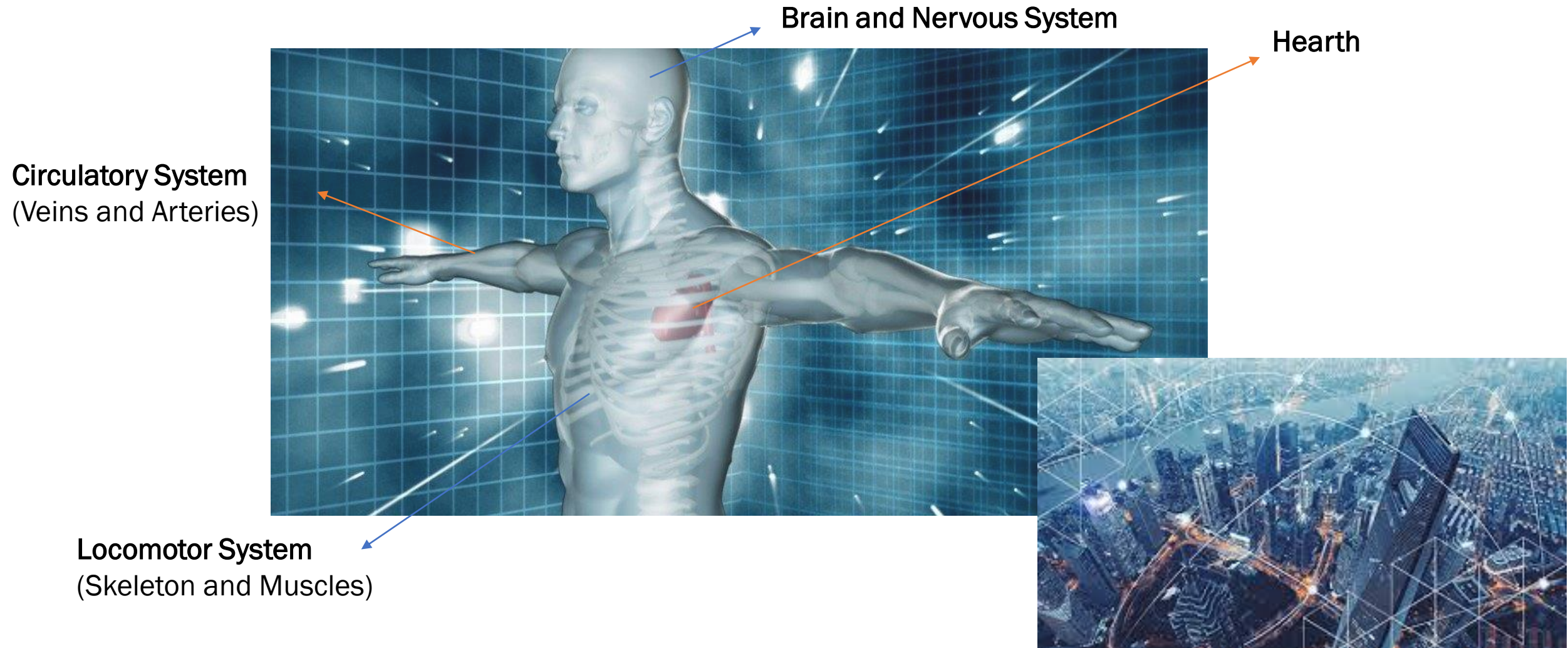
Biomimicry. It's Time to Ask Nature

www.asknature.org



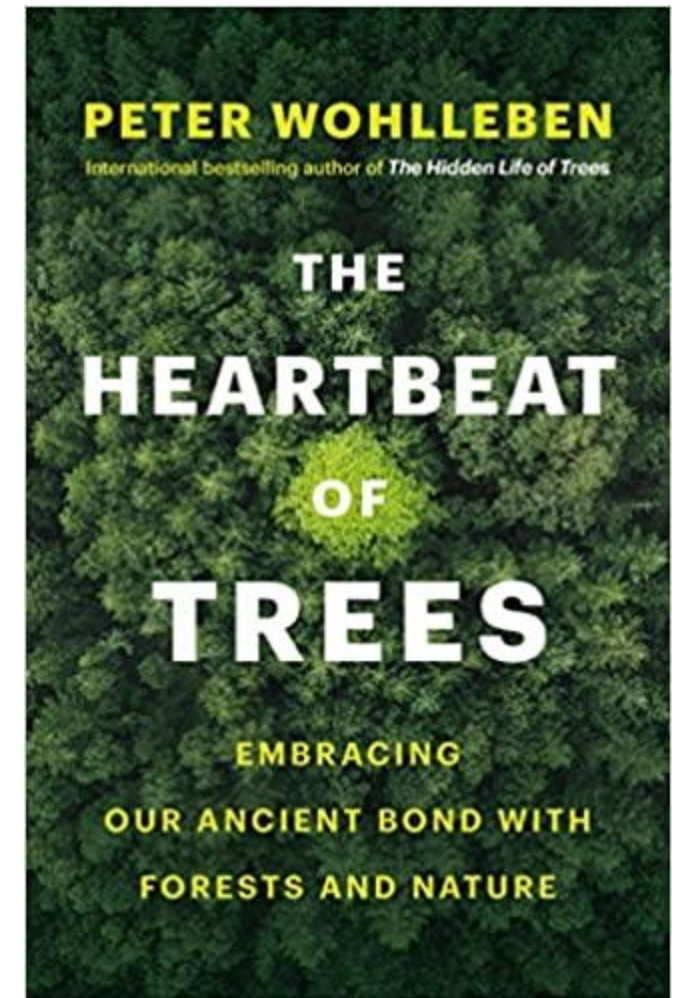
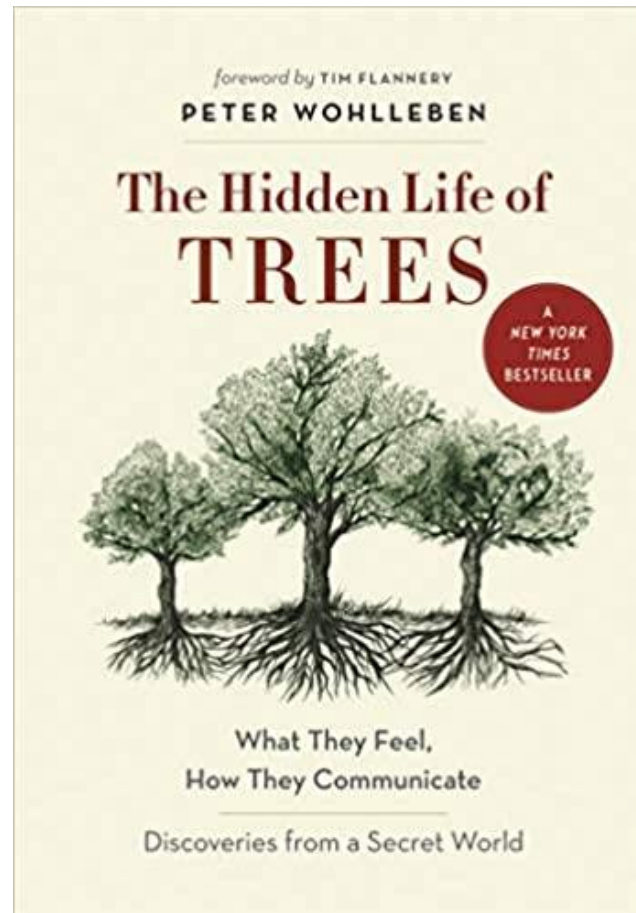
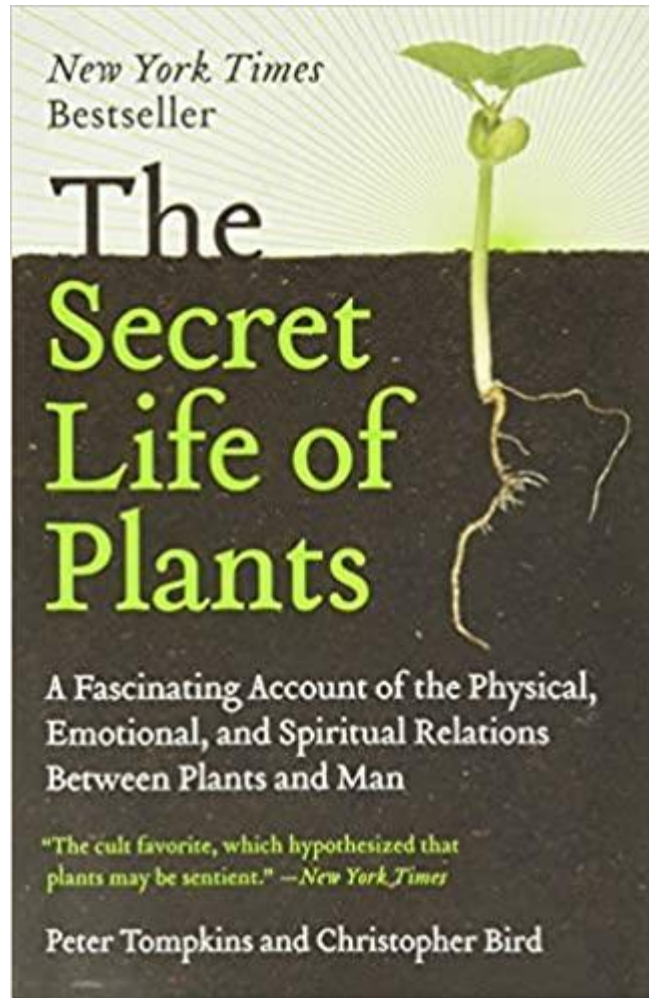
BIOMIMCRY

Urban Autopoiesis



The Secret Life of Plants explores plants' response to human care and nurturing, their ability to communicate with man, plants' surprising reaction to music, their lie-detection abilities, their creative powers, and much more; and forests are social, cooperative creatures connected through underground networks by which trees communicate their vitality and vulnerabilities with communal lives not that different from our own.

Singing Plants at Damanhur: <https://www.youtube.com/watch?v=aZaokNmQ4eY>



Captain Kirk: Bezos' Blue Origin sent William Shatner into space



*You may say that I'm a dreamer, but I'm not the only one.. I hope someday you'll join us.
And the world will be as one...* (John Lennon, Imagine

<https://www.youtube.com/watch?v=YkgkThdzX-8>)

XIE XIE

